



EX 4112, A













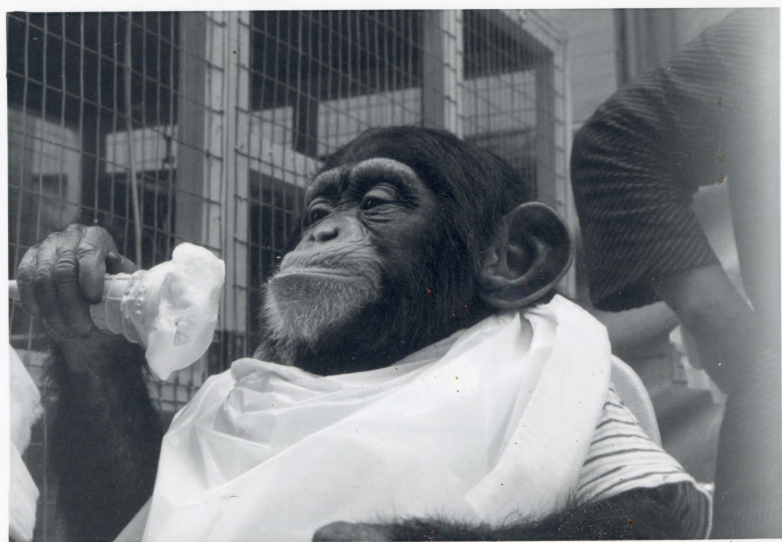












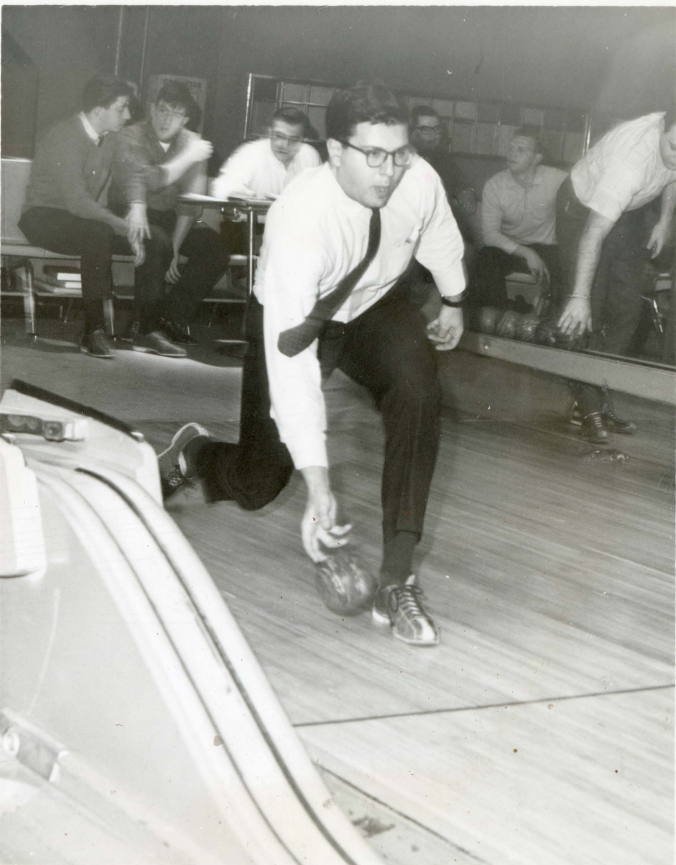














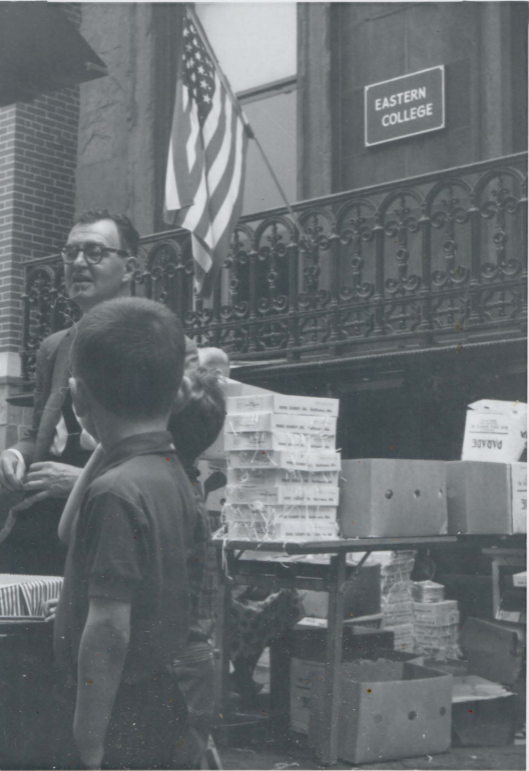




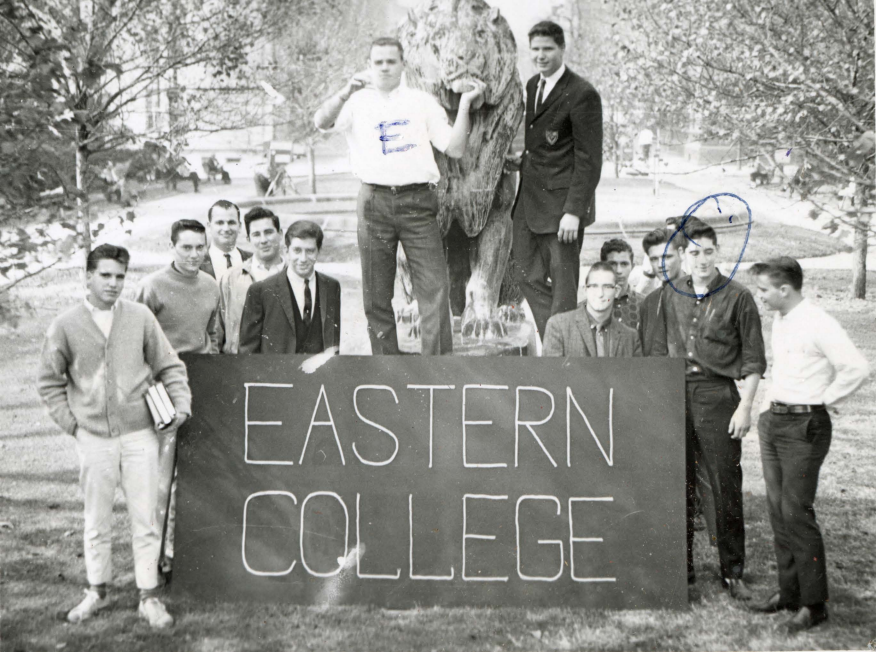
EASTERN
COLLEGE



EASTERN
COLLEGE







E

EASTERN
COLLEGE



1. Total
 2. Net income (or loss) from sales and exercises (columns 2 less a net of columns 3, 4, and 10)
Part K—OTHER INCOME OR LOSSES
 1. Partnership income, dividend, and other (see instructions)
 2. Excess on trusts (income and addition)
 3. Other sources (see instructions)

Total of Parts 10, 11, and 12. Enter here and on line 5c, page 1, of Form 1040.

Document No. 518A (Rev. 11-62)

1. Total
 2. Net income (or loss) from sales and exercises (columns 2 less a net of columns 3, 4, and 10)
Part K—OTHER INCOME OR LOSSES
 1. Partnership income, dividend, and other (see instructions)
 2. Excess on trusts (income and addition)
 3. Other sources (see instructions)

Total of Parts 10, 11, and 12. Enter here and on line 5c, page 1, of Form 1040.

Document No. 518A (Rev. 11-62)

NO SMOKING



3. Minimum amount of interest income for which exemption is available
 4. Total
 5. Total amount of interest income for which exemption is available
 6. Total amount of interest income for which exemption is available
 7. Total amount of interest income for which exemption is available
 8. Total amount of interest income for which exemption is available
 9. Total amount of interest income for which exemption is available
 10. Total amount of interest income for which exemption is available
 11. Total amount of interest income for which exemption is available
 12. Total amount of interest income for which exemption is available
 13. Total amount of interest income for which exemption is available
 14. Total amount of interest income for which exemption is available
 15. Total amount of interest income for which exemption is available

Document No. 588B (Rev. 3-63)



















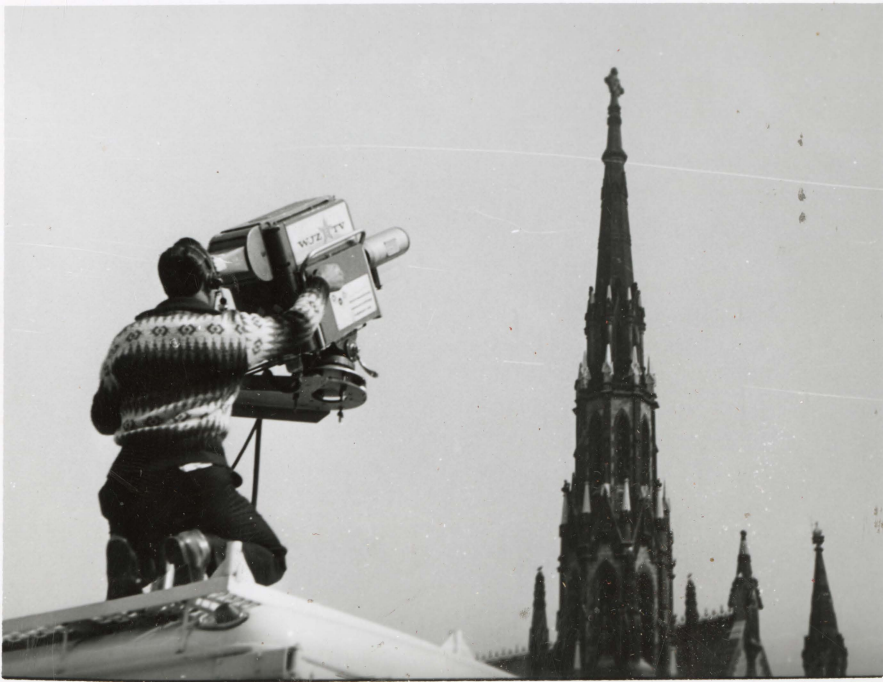






**BALTIMORE
WELCOMES
JACK
PALANCE**

























EASTERN COLLEGE

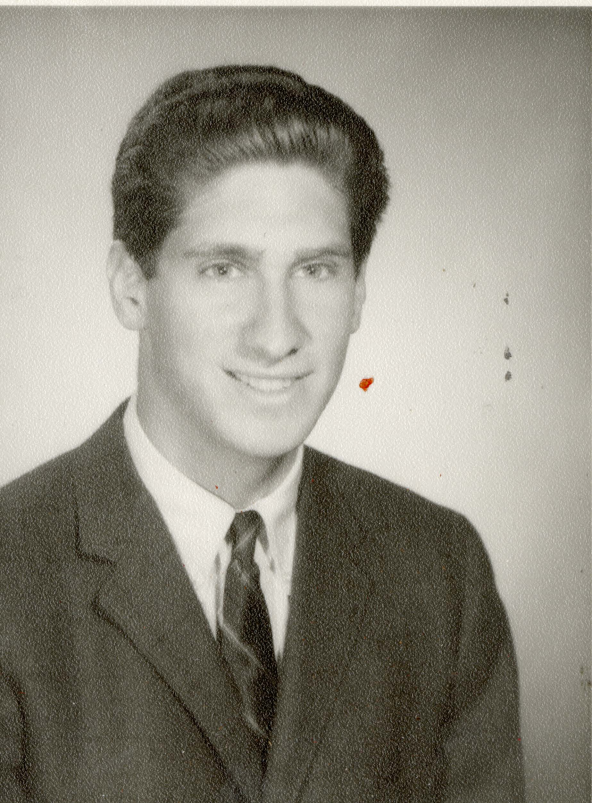
























WHERE'S
JERRY
WACHTER?

?



