













NO STOPPING
45 - 6 PM
NO PARKING
8 AM - 6 PM
SNOW
EMERGENCY
ROUTE
NO PARKING
DURING EMERGENCY
VEHICLES TOWED
AWAY

BRIDGE
CATERING
CATERING
CATERING

HAVE YOU TRIED

J.W. Dant

DISTILLERS & IMPORTERS

DISTILLERY
BOTTLED
BOURBON

NOTARY PUBLIC

LEARNER'S DRIVING PERMITS
PROOF OF AGE FOR OLD AGE PENSION
BIRTH CERTIFICATE FOR ALL USES
ACCIDENT REPORTS

1400

Keys

RADIO

BATTERIES

W. MARKET



CUT RATE
LIQUORS
MINATURES

There is Only One
Smirnoff
VODKA



SU
WO
ARM

RES
THES
US

BOND
CUT-RATE
LIQUOR
TO GO

BOND CUT-RATE LIQUOR

PATENT MEDICINES
COLD BEER

BOND
CUT-RATE
LIQUOR

BO
CUT-
LIQU
THE
CAS

OPEN

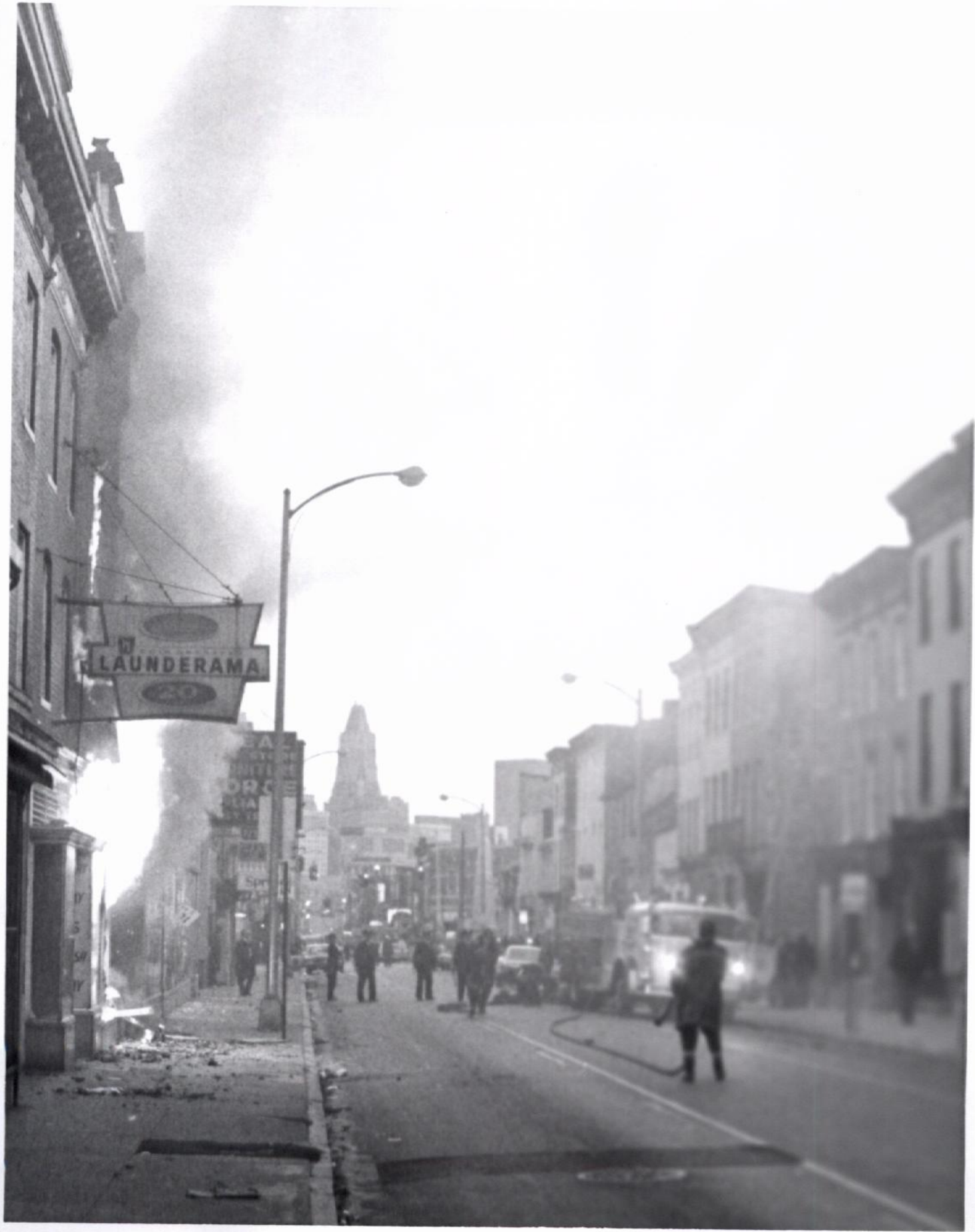






NO STOPPING
ANY TIME
NO STOPPING
7 - 9 AM
4 - 6 PM





















PURPLE
HEART

THRIFT STORE

NO PARKING
ANYTIME
4-6PM

THRIFT STORE
CUSTOMER PARKING ONLY
MULTIPLE-SEAT VEHICLES WILL BE
TOWED FROM THIS AREA







1010
N. Gay St.

FURNITURE

PHONE REPAIR

J. S. P. W. K. G.

MARYLAND CHINA CO.

CERAMIC
KILNS and
DECALS

CHINA
PAINTING
COLORS

SHOW
MORNING
ROUTE

NO PARKING
ON STREET
DURING THE
DAY









Rodman's
HAT MAKERS MEN'S WEAR

ENN OPTICAL CO

S EXAMINED
SSES FITTED

RODMAN'S

SCOTT'S
BARBER SHOP

LDROOT



H-O-MAT

TELEPHONE

ICE CREAM

COSMETICS - DRUGS - VARIETIES

ICE CREAM

FLAG COURT
PHARMACY

MEDICAL CARE
PRESCRIPTIONS

67-9999

Coca-Cola

ICE CREAM





TWO
WAY
TRAFFIC
KEEP RIGHT

NO PARKING
ANYTIME
7-11-44

CURB
LANE
ONLY
4-6 PM

TRADE
BEER





J&E GROCERY

A very special place of business

J&E GROCERY

Come to the U.N.





MARYLAND PHARMACY
- LIQUORS DRUGS -

Meadow
Gold
Ice Cream

MARYLAND
RESCRIPTION
PHARMACY
LIQUORS

MONEY ORDERS

COLD BEER 3.00

ONE WAY

NO
LEFT
TURN

EDS



ENL008











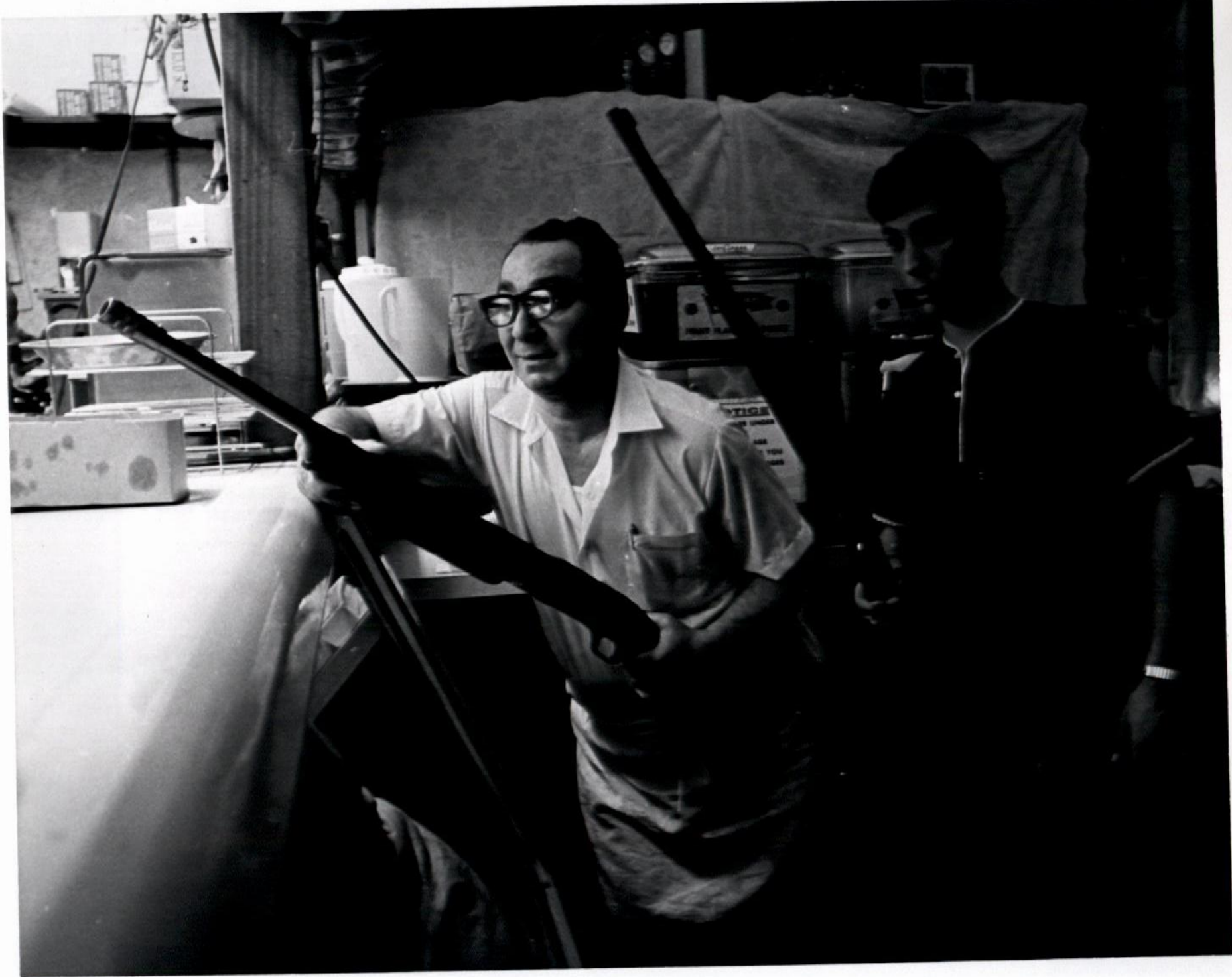


































BROADWAY
AGENCY
United
STORAGE CO.

Coast to Coast Service

BROADWAY MOVING
the best way STORAGE

NO LEFT TURN
7-10AM - 3-7 P.M.



UNITED
LOAN
CO

EATERS

WINE & LIQUORS

WALL PAPER

SHOES & HATS

REACH FOR
Madera
Madera
Madera

CALIFORNIA'S
FINEST WINE

STOP



HARDWARE
PAINTS
Wagner's
GIFTS
GREETING CARDS

LIVELY ST
NO PARKING
4-6 PM

←

K P O





NO STOPPING
4-6 PM

SNOW
ROUTING
ROUTE

ROYAL CROWN
Tobacco

Abbotts

COLLEGE DRIVE

102 N







HASSLINGER'S
SEA FOOD

BARBO 15

NO STOPPING
CARS
LOADED AWAY
TRANSIT STOP
No. 15

NO STOPPING
CARS
LOADED AWAY
TRANSIT STOP
No. 15



BLACK POWER

BLACK
POWER

BLACK
POWER

BLACK
POWER







NOVAK'S FOOD MKT.
Cp'd Fresh Products for all Americans
BR. 6-2564
Suburban
FINE BREWERS

LINDEN ST

GLASS
REPAIR & PAINT
BY A. & M. MEYER

**SNYDER'S
MEN'S SHOP**

MEMBER OF THE
SNYDER'S
HATS

MEMBER OF THE
SNYDER'S
TIES SOCKS

MEMBER OF THE
SNYDER'S
SHIRTS

**TRANS
ELECTRONICS**

**TRANS
ELECTRONICS**













UNITED LOAN CO.
LICENSED PAWNBROKER
Where Borrow
816 818
We Loan Money On
Anything Of Value

UNITED
LOAN
CO.

UNITED
LOAN
CO.

816 UNITED LOAN CO. 818
TELEVISION RADIOS

LICENSED
UNITED
LOAN
CO.

Self-Help Housing Program East

SOU
BROTH

E. BUGAT
CLOTH
UNIT
828

ECKIE'S
Beauty
Center





CURB
LANE
ONLY
4-6 PM



STOP AND SHOP

1893 COTTON

124

UNION FOOD CENTER

SELF SERVICE
FREE PARKING
AROUND CORNER
ON FEDERAL STREET

UNION FOOD CENTER SELF SERVICE MARKET UNION FOOD CENTER

Uncle Bear's Corner Uncle Bear's Corner
HATS - LAMPS - CLOTHING HATS - LAMPS - CLOTHING

NO STOPPING
ANYTIME
TRANSIT
STOP

FREE PARKING
STOP
UNION
HIGH ON



PLAYBOY
TAVERN

1700

PLAYBOY
TAVERN

Black
POWER

POWER



ONE WAY

REISS SELF SERVICE MARKET MEATS

fresh up

7up

Royal Crown Cola
BET. 1912-2010



SPEEDEE WASH 20
COIN OPERATED DO-IT-YOURSELF

NO STOPPING
CARS
MOVED AWAY
TRANSIT STOP
No 15

SAM THE

BLACK



ES (1229) SLIP COVERS
WEAR DRAPES
BLANKETS
BED SPREADS

CITY CUT-RATE
DRUG STORE

SHOE
SERVICE

1225





DICKMAN'S DRUGS

LIQUORS & DICKMAN'S & PRESCRIPTIONS

WINE & LIQUOR
COLD BEER
DRUGS

THREE
FOUR
FIVE
SIX
SEVEN
EIGHT
NINE
TEN
ELEVEN
TWELVE
THIRTEEN
FOURTEEN
FIFTEEN
SIXTEEN
SEVENTEEN
EIGHTEEN
NINETEEN
TWENTY





ROSENSTEN'S

Rosenstein's
LADIES, CHILDREN
& INFANTS WEAR

ROBERT BERS

THE ARMY

HEADS CHOICES PRODUCT



BIG VALUE
SUPER MARKETS

THE RICE INN

KEYS WADE
KEMPER HARDWARE

Paint





LIQJORS
LITTLE JOE'S

HOWARD'S
SAUSAGE STORE

LEO LAM
CASH
FURNITURE
CLOTHING
APPLIANCES



WINKS

PHARMACY

SCHOOL CROSSING

TELEPHONE

DRUGS PRESCRIPTIONS
WE F MEDIC CAR
PRESCRIPTION



PENN CARRY OUT

SUBMARINES!

STREET FOOD
HANDS HELD

Lee Cross
BARBER SHOP
PROCESsing

Lee Cross
BARBER SHOP
PROCESsing

Manny
CUSTOM TAILOR



906 PROGRESS DEPARTMENT STORES 902

CLINE'S

Lovers
of fine Bourbon prefer
J.T.S. BROWN
100

BRILLIANT CIGARETTES

MUSICAL BOARD



STATE OF BERNS

BUY HERE
and SAVE
BRADY'S
CUT-RATE
LIQUOR AND BEER DEALER

DRINK
Coca-Cola
CUT
RATE

SNOW
EMERGENCY
BOTTLE
CUT
RATE
ORS

Whiskey 28¢

CANNED BEER 26¢

CANNED BEER 26¢

CUT
PACKAGE







98

24

2.98

AWAY

12.98

11.98

NAC

CLOSED



MONEY ORDERS 7up

NOTARY PUBLIC
MINIATURES
WINE GALS. & WHISKEY

NATIONAL BOHEMIAN

SOLL





IDEAL
DEPT. STORE
FURNITURE
NORGE
APPLIANCES
EASY TERMS

723

IDEAL 723
IDEAL DEPT. STORE 723
NEW USED FURNITURE
APPLIANCES • CLOTHING • FURNITURE

723 **IDEAL** 723
NEW * USED
FURNITURE • APPLIANCES
BOUGHT • SOLD
BR. 6-3168 TERMS

NO LOITERING
IF SEEN
CALL 6-3168

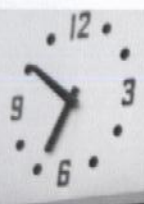
CABINETS
9⁹⁵

TWO
WAY
TRAFFIC
KEEP RIGHT





Dress Shop



BESTFORM
no finer fit at any price

Gleem PAINTS
PLUMBING and ELECTRICAL SUPPLIES... GLASS

JAY'S
HARDWARE & PAINTS

TWO WAY TRAFFIC AHEAD

SCHOOL BUS

1991

Doll HAT SHOP

HOSIERY
HATS

NS

Epsteins

LAY-A-WAY · NOW
FOR SPRING and EASTER

SEE
LARGE
9

SEE
LARGE
9

SEE
LARGE
9

SEE
LARGE
9



FURNITURE
FAIR
EASY CREDIT

NO STOPPING
CARS
TOWED AWAY
TRANSIT
STOP
No. 15

Coca-Cola
CURTAIN-SUBMARINES
Coca-Cola

GEORGE J. THALER

INCORPORATED

EST. 1860

GEORGE J. THALER

INCORPORATED

EST. 1860

WARM MORNING COAL, GAS & WOOD HEATERS

BARBECUE UNITS

GAS RANGE PARTS
MISCELLANEOUS
STOVE STOVE STOVES

ONE WAY



1938
ELECT JIM
McLEAN
CITY COUNCIL





Wm. KAUFMAN & CO.

KAUFMAN'S

FURNITURE

CREDIT

FURNITURE - APPLANCES

KAUFMAN'S
FURNITURE & CLOTHING
on Easy Credit Account

HARRY'S
BIRNIE 571

SUPER
MUSIC

NO
PARKING
8 AM - 6 PM
EXCEPT FOR
LOADING UNLOADING





